

*Purple
Line* **CATs**
Community Advisory Teams



College Park

CAT Meeting #3
October 23, 2018

College Park

Adelphi Road to Kenilworth Avenue

Presented by:

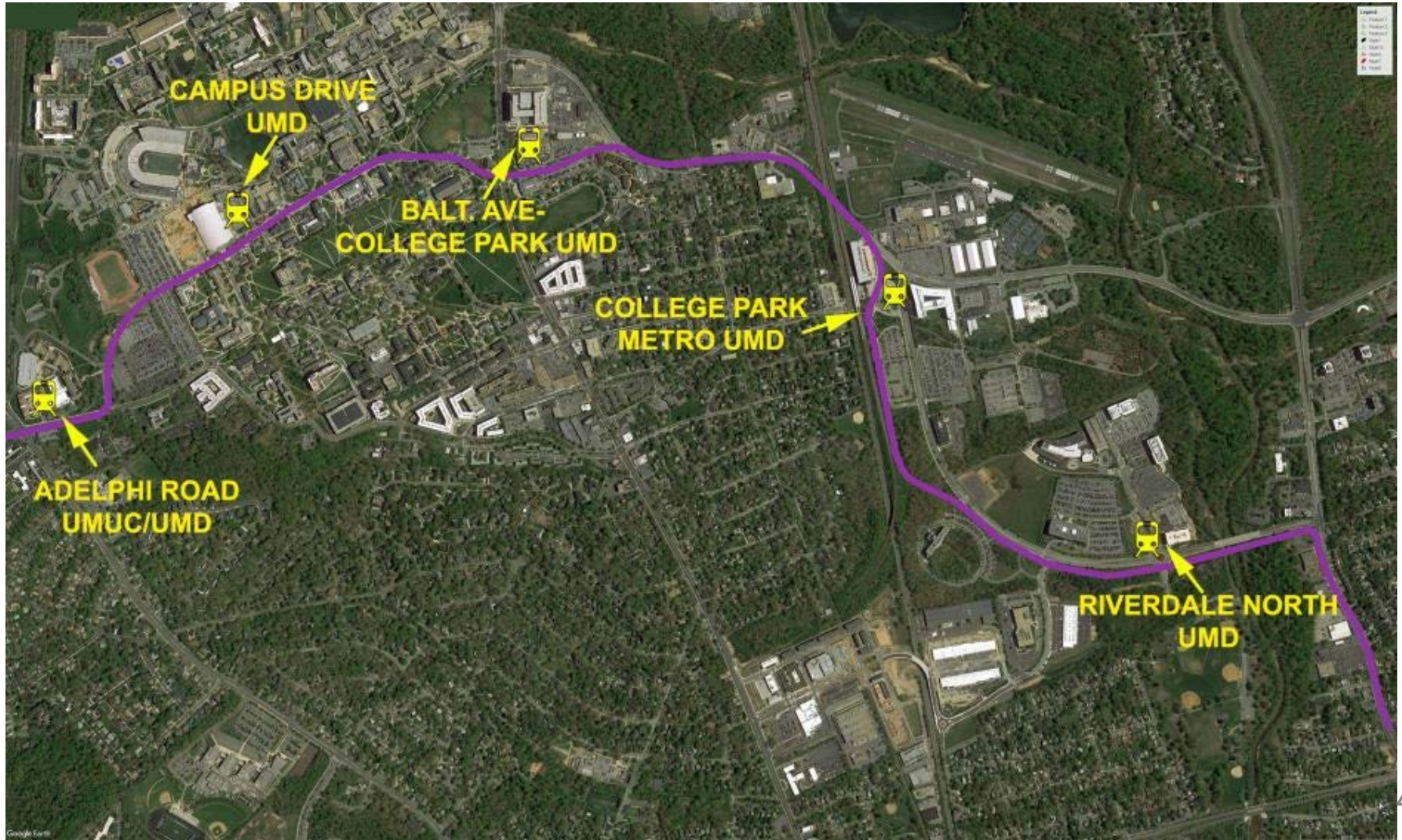
Tim Pinkerton – Area 3 Manager

John Koussis – Area 3 Field Engineer

MEETING OVERVIEW

- Work complete (as of October 2018)
- 6 month look ahead
- Road closures
- Detours
- Construction work hours
- Maintenance of traffic & pedestrian safety
- Questions & answers

ALIGNMENT – COLLEGE PARK



WORK COMPLETE (AS OF OCTOBER 2018)

University of Maryland

- Tree clearing
- Campus Drive lane closure (between Regents Drive and Library Lane)
- Tree protection fencing installed

Rossborough Lane (Baltimore Avenue)

- Demolition of UMD Building 212

Campus Drive East (Paint Branch Parkway)

- Began construction of new pump station
- Installed erosion and sediment control devices
- Relocation of underground electric utility
- Relocation of existing pump station communication antenna

WORK COMPLETE (*AS OF OCTOBER 2018*)

River Road

- Established long term three-acre construction staging area on the north side of River Road (across from American Center for Physics)
- Installed erosion and sediment control devices
- Installed temporary construction entrances on Haig Drive and Rivertech Court

DEMOLITION OF UMD BUILDING 212



PUMP STATION ON CAMPUS DRIVE



TREE PROTECTION FENCING



6 MONTH LOOK AHEAD

Campus Drive West (Adelphi Road to Presidential Drive)

- Tree clearing
- Continue installation of erosion and sediment control devices
- Underground utility relocations
 - *Notifications will be provided if there will be any interruptions to service*

University of Maryland

- Underground utility relocations
 - *Notifications will be provided if there will be any interruptions to service*
- Continue installation of erosion and sediment control devices
- Storm drain installation near the new Cole Field House and Regents Drive
- Start of construction and landscaping for the new M

6 MONTH LOOK AHEAD (CONTINUED)

Rossborough Lane (Baltimore Avenue)

- Tree clearing
- Continue installation of erosion and sediment control devices
- Underground utility relocations
 - *Notifications will be provided if there will be any interruptions to service*

Campus Drive East (Paint Branch Parkway)

- Continue new pump station construction
- Storm drain installation
- Continue installation of erosion and sediment control devices
- Underground utility relocations
 - *Notifications will be provided if there will be any interruptions to service*

6 MONTH LOOK AHEAD (CONTINUED)

River Road

- Continue installation of erosion and sediment control devices
- Tree clearing and brush removal
- Begin bridge foundation and substructure at the Northeast Branch of the Anacostia
- Construction of retaining wall south of College Park Metro Station
- Underground utility relocations
 - *Notifications will be provided if there will be any interruptions to service*

CLOSURES AND DETOURS

Active:

- Campus Drive eastbound between Library Lane and Regents Drive

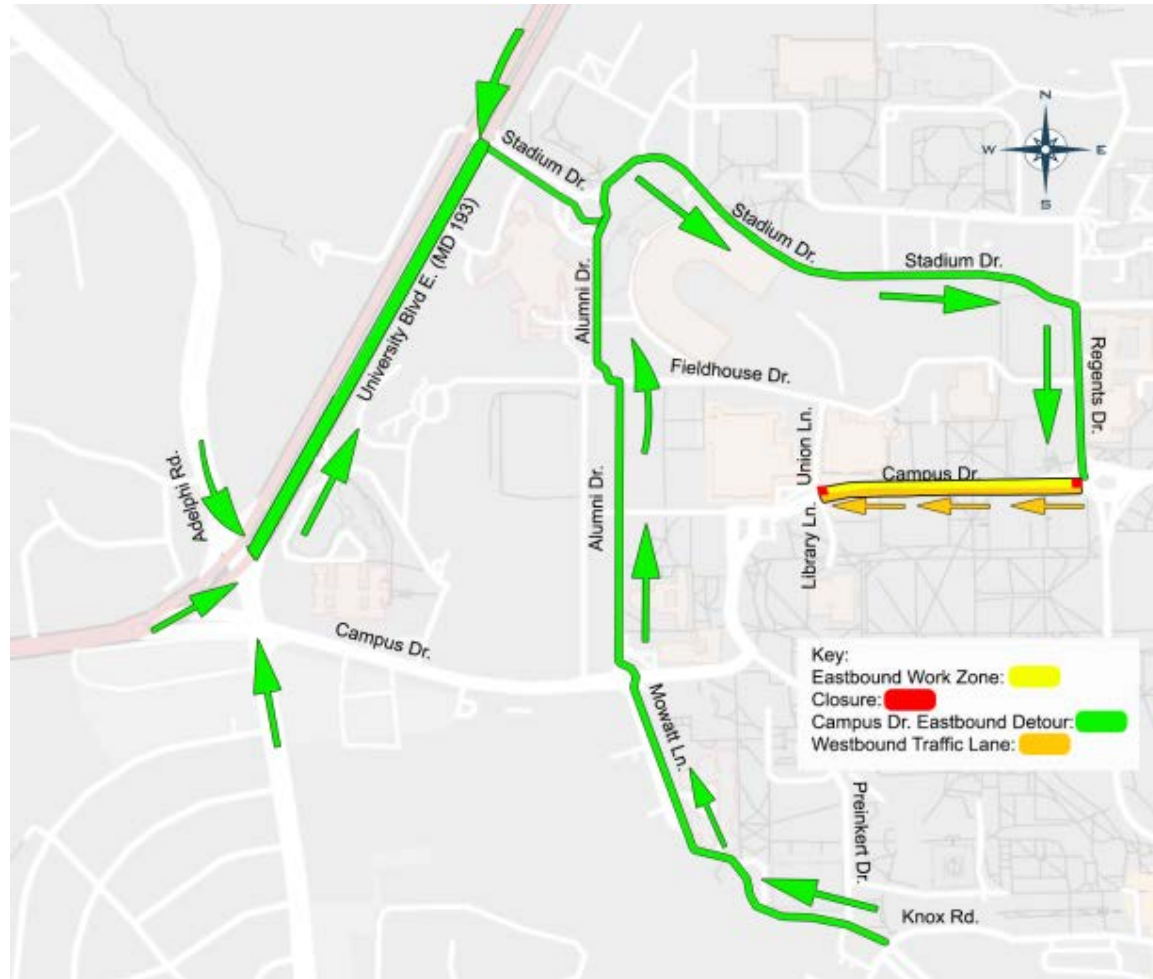
Upcoming:

- Full closure of Library Lane and Union Lane for utility work



CAMPUS DRIVE DETOUR

- Westbound traffic still flows normally during this closure
- Drivers on University Boulevard E. (MD 193) will be directed to use Stadium Drive
- Detour signage is posted along route to direct drivers and is posted online for further reference



TRANSIT COORDINATION

The Purple Line team is working with Prince George's County and has frequent meetings with the agencies operating:

- MetroBus
- TheBus (Prince George's Co.)

Coordination could include

- Bus stop relocations
- Route modifications



CONSTRUCTION WORK HOURS

- **Day shift work hours** are 7:00 AM – 5:00 PM Monday – Friday
- **Night shift work hours** are 8:00 PM – 4:30 AM Monday –Friday
- **Lane closures** will be 9:00 AM – 3:00 PM Monday – Friday or per specification requirements
- **Weekend** work may occur as needed to support construction operations

****Prior notification will be provided to those who are signed up for alerts.**

MAINTENANCE OF TRAFFIC—WHAT TO EXPECT

- Existing traffic patterns will change as work occurs
- Work may occur on both sides of the road and across roadways
- When a lane closure is required, a notice will be distributed
- Orange cones and barrels (temporary barricades) will be in place
- Flag-person (when required) will direct traffic
- Underground utility work may require temporary road plates
- **Operations may be done at off-peak hours**



PEDESTRIAN SAFETY

- Work zones will be clearly marked and the public should not enter
- Pedestrian detours will be clearly signed
- When closures occur, alternate access will be provided
- Pedestrian crossings will be maintained
- **Pedestrians are urged to obey construction signage and keep out of work zones**



STAY UP TO DATE ON PURPLE LINE PROGRESS

- Sign up for construction notices at **Purplelinemd.com**
- For construction related questions and concerns, contact PLTP:
 - Email at outreach@ptcllc.com
 - 24/7 hotline at **240-424-5325**
- For general project questions and comments, contact MTA public outreach:
 - Email at outreach@purplelinemd.com
 - Call **443-451-3706** or **443-451-3705** (Español)